



# Lotus Connections – Architektur und Installation

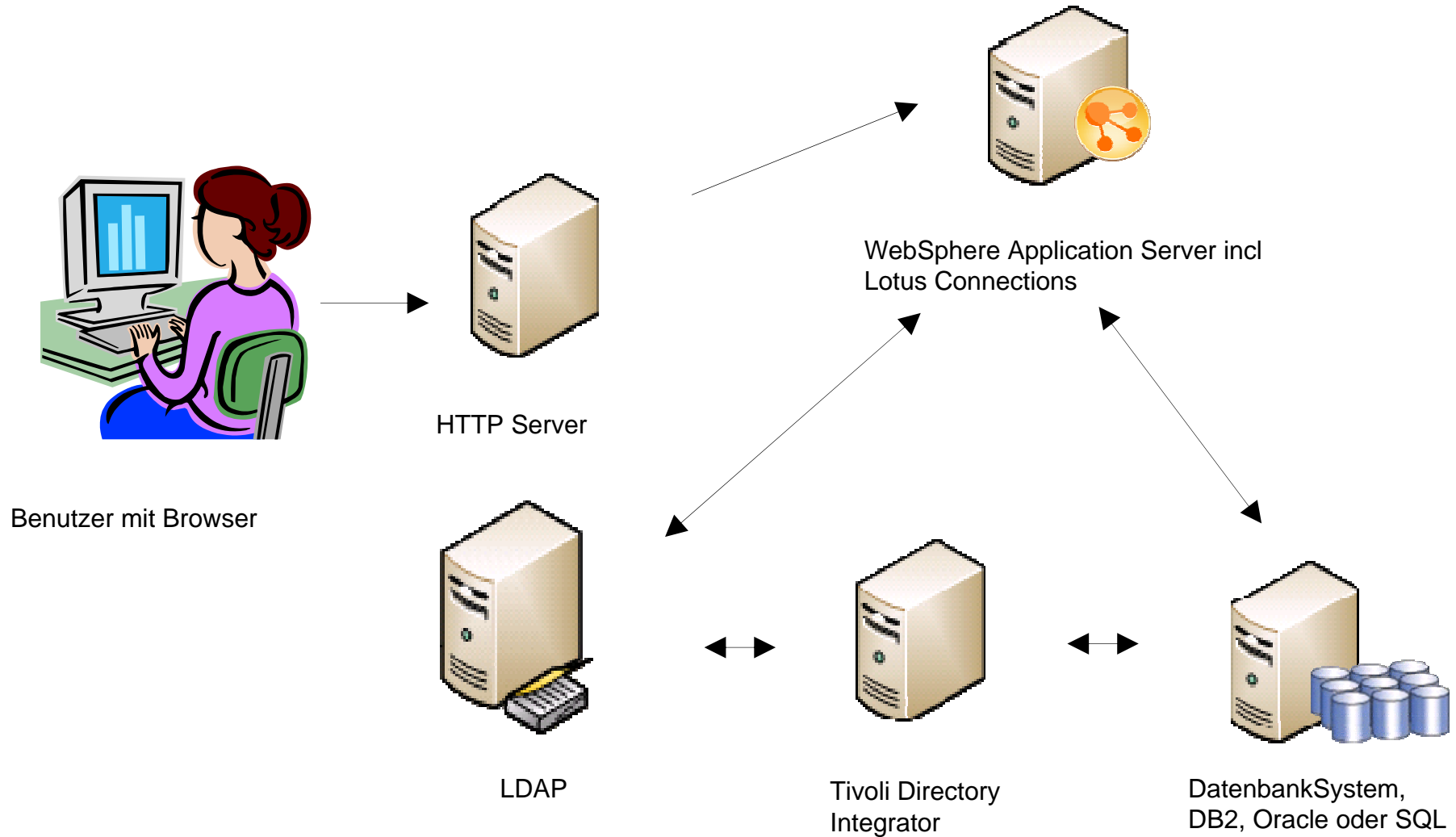
**Lotus** software

A decorative horizontal bar composed of various colored segments (yellow, red, purple, cyan, green, orange, grey, white, yellow, yellow, yellow, yellow, yellow) is located above the footer area.

@business on demand software

© 2008 IBM Corporation

# Architektur Connections



# Unterstützte Software

## Lotus Connections Server

WAS 6.1 (including IHS) on:

Red Hat Enterprise Linux® ES v4

Windows 2003 / 2008 Server

AIX

SuSE Linux

## LDAP

IBM TDS 6

MS Active Directory 2003/ADAM

Lotus Domino® v7/v8

Novell eDirectory

Sun ONE

“OpenLDAP” (supported on demand)

## DatenbankSystem

DB2® Enterprise Server Edition Version 9.1 FP 6

DB2® Enterprise Server Edition Version 9.5 FP3

Microsoft SQL Server Ent.Version 2005 SP2

Oracle Database 10g Enterprise Edition

<http://www-01.ibm.com/support/docview.wss?rs=899&uid=swg27016547>

# Installationsschritte

1. IBM WebSphere Application Server installieren
2. WAS Server Fixpack 23 und SDK Fixpack 23 installieren
3. Aktivierung des LDAP' s auf dem WAS Server
4. Datenbanken erstellen
5. Installation des Tivoli Directory Servers zur Synchronisierung der Profildaten
6. Konfiguration der Profildaten Synchronisation
7. Installation Lotus Connections auf Basis des WAS Servers
8. Installation des HTTP Servers incl WebSphere Plugin
9. Finalisierung der Installation und Performance Tuning

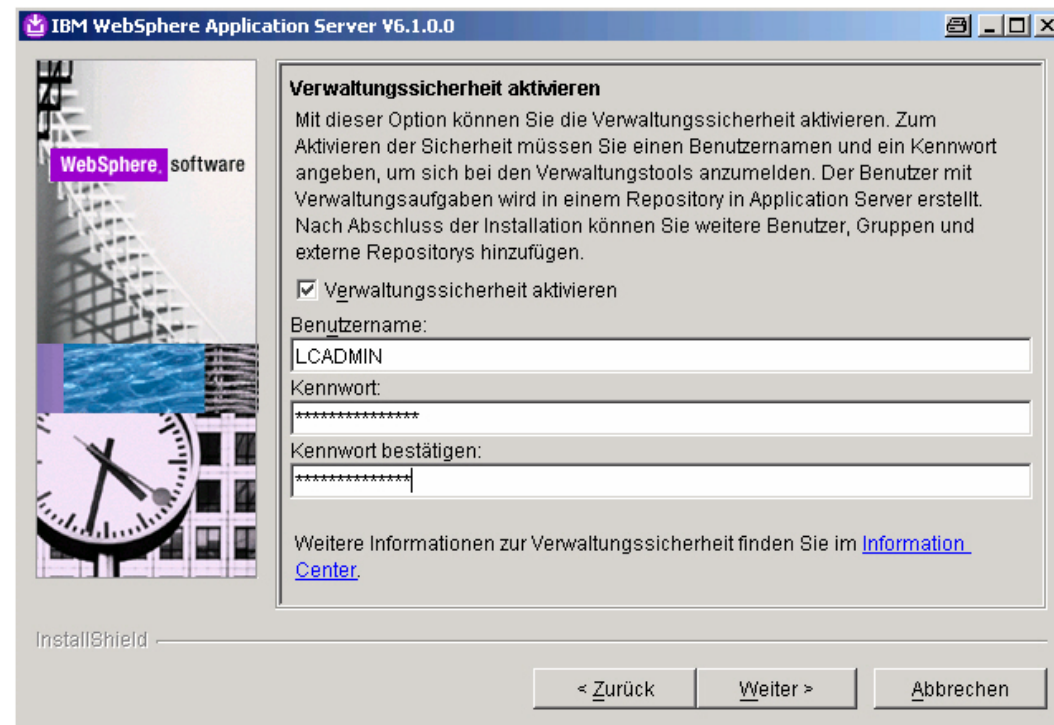
[http://publib.boulder.ibm.com/infocenter/ltscnct/v2r0/topic/com.ibm.connections.25.help/c\\_preinstall\\_actions.html](http://publib.boulder.ibm.com/infocenter/ltscnct/v2r0/topic/com.ibm.connections.25.help/c_preinstall_actions.html)

# Installationsschritte

## 1. IBM WebSphere Application Server installieren

Wichtig: Verwaltungssicherheit muss  
aktiviert werden  
Passwort sollte hier bereits den  
Sicherheitsrichtlinien des  
Unternehmens  
Gerecht werden

TIP:  
Instalationsverzeichnis so kurz als  
mgl halten



[http://publib.boulder.ibm.com/infocenter/ltscnct/v2r0/topic/com.ibm.connections.25.help/c\\_preinstall\\_actions.html](http://publib.boulder.ibm.com/infocenter/ltscnct/v2r0/topic/com.ibm.connections.25.help/c_preinstall_actions.html)

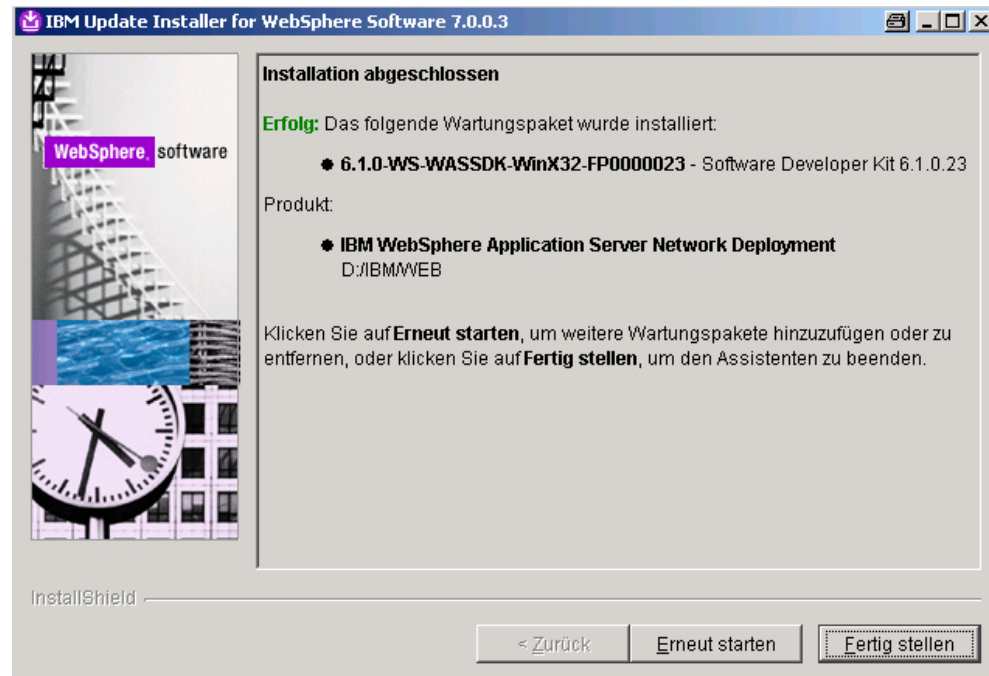
# Installationsschritte

## 2. WAS Server Fixpack 23 und SDK Fixpack 23 installieren

Für die Installation der Fixpacks benötigt man den WAS Update Installer 7.0.0.3

Download Seite:

<http://www-01.ibm.com/support/docview.wss?rs=0&uid=swg24022255>



[http://publib.boulder.ibm.com/infocenter/ltscnct/v2r0/topic/com.ibm.connections.25.help/c\\_preinstall\\_actions.html](http://publib.boulder.ibm.com/infocenter/ltscnct/v2r0/topic/com.ibm.connections.25.help/c_preinstall_actions.html)

# Installationsschritte

## 3. Aktivierung des LDAP's auf dem WAS Server

Integrated Solutions Console Willkommen LCADMIN Hilfe | Abmelden

Sichere Verwaltung, Anwendungen und Infrastruktur

**Sichere Verwaltung, Anwendungen und Infrastruktur**

Sichere Verwaltung, Anwendungen und Infrastruktur  
Die Anwendungsserverumgebung ist vollständig sicher, wenn die Verwaltung eingeschränkt ist. Die ebenfalls sicher.

Konfiguration

Konfigurationsassistent für Sicherheit Bericht zur Sicherheit

**Verwaltungssicherheit**

Verwaltungssicherheit aktivieren

- Aufgabenbereiche für Benutzer mit Verwaltungsaufgaben
- Aufgabenbereiche für Gruppen mit Verwaltungsaufgaben

**Anwendungssicherheit**

Anwendungssicherheit aktivieren

**Java-2-Sicherheit**

Java-2-Sicherheit verwenden, um den Anwendungszugriff auf lokale Ressourcen zu besch

- Warnen, wenn Anwendungen benutzerdefinierte Berechtigungen erteilt werden
- Zugriff auf Ressourcenauthentifizierungsdaten einschränken

**Repository für Benutzer-Accounts**

Aktuelle Realm-Definition  
Zusammengefasste Repositories

Verfügbare Realm-Definitionen  
Zusammengefasste Repositories

Konfigurieren Als aktuelle Re

Gibt an, dass wähn  
Warnung ausgeg  
Java-2-Sicherheit  
Anwendungen norr

[http://publib.boulder.ibm.com/infocenter/ltscnct/v2r0/topic/com.ibm.connections.25.help/c\\_preinstall\\_actions.html](http://publib.boulder.ibm.com/infocenter/ltscnct/v2r0/topic/com.ibm.connections.25.help/c_preinstall_actions.html)

# Installationsschritte

## 4. Datenbanken erstellen

Mit dem Datenbankassistenten

[http://publib.boulder.ibm.com/infocenter/ltscnct/v2r0/topic/com.ibm.connections.25.help/t\\_preparing\\_the\\_database\\_wizard.html](http://publib.boulder.ibm.com/infocenter/ltscnct/v2r0/topic/com.ibm.connections.25.help/t_preparing_the_database_wizard.html)

Oder

Mit den bereitgestellten SQL Skripten

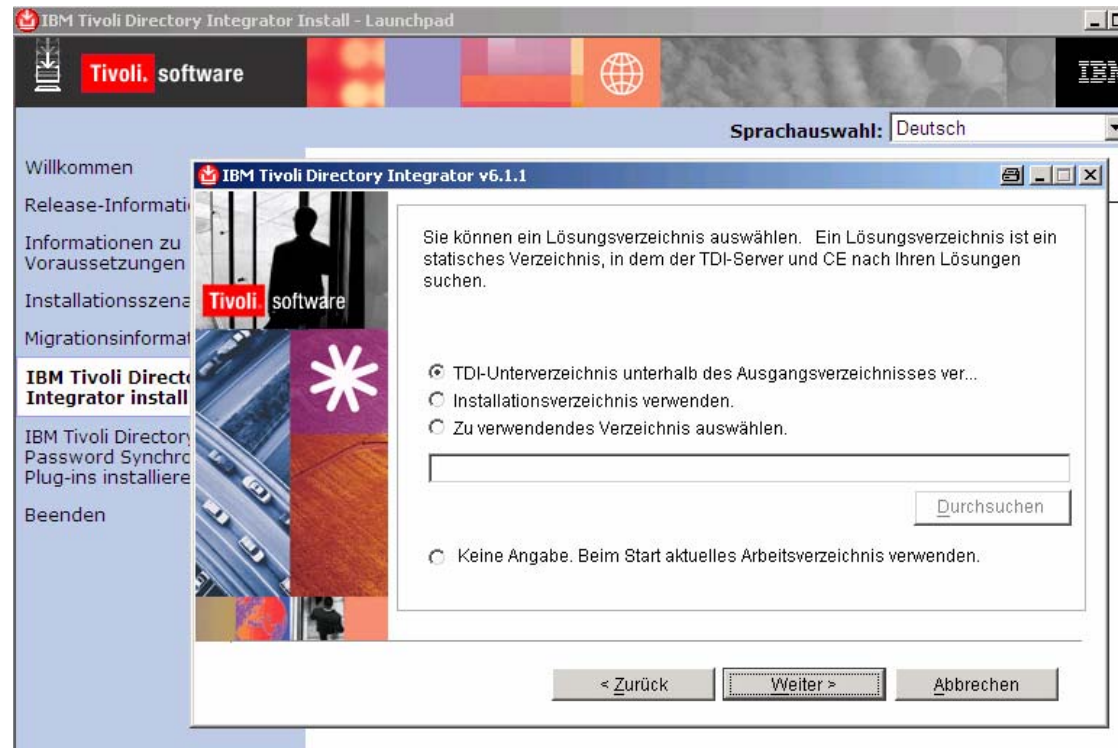
[http://publib.boulder.ibm.com/infocenter/ltscnct/v2r0/topic/com.ibm.connections.25.help/t\\_install\\_databases\\_using\\_scripts.html](http://publib.boulder.ibm.com/infocenter/ltscnct/v2r0/topic/com.ibm.connections.25.help/t_install_databases_using_scripts.html)

[http://publib.boulder.ibm.com/infocenter/ltscnct/v2r0/topic/com.ibm.connections.25.help/c\\_preinstall\\_actions.html](http://publib.boulder.ibm.com/infocenter/ltscnct/v2r0/topic/com.ibm.connections.25.help/c_preinstall_actions.html)

# Installationsschritte

## 5. Installation des Tivoli Directory Servers zur Synchronisierung der Profildaten

Wichtig: Das Lösungsverzeichnis wird im nächsten Schritt kopiert



[http://publib.boulder.ibm.com/infocenter/ltscnct/v2r0/topic/com.ibm.connections.25.help/c\\_preinstall\\_actions.html](http://publib.boulder.ibm.com/infocenter/ltscnct/v2r0/topic/com.ibm.connections.25.help/c_preinstall_actions.html)

# Installationsschritte

## 6. Konfiguration der Profildaten Synchronisation

TIP: Für diesen Schritt bitte viel Zeit nehmen und einplanen

Folgende Dateien müssen angepasst werden:

Profiles\_tdi.properties  
tdi\_env.bat

Map\_dbrepos\_from\_source.properties ( hier gibt es Beispiel Dateien für die LDAP Systeme )

```
C:\ Command Prompt
D:\>cd ibm
D:\IBM>cd TDI/6.1.1
The system cannot find the path specified.
D:\IBM>cd D:\IBM\TDI\U6.1.1\TDISOL\win
D:\IBM\TDI\U6.1.1\TDISOL\win>populate
'populate' is not recognized as an internal or external command,
operable program or batch file.
D:\IBM\TDI\U6.1.1\TDISOL\win>populate_from_dn_file.bat
24.09.2009 11:24:20 com.ibm.lconn.core.appext.impl.SNAXPersonServiceImpl <init>
INFO: CLFRA0003I: The com.ibm.lconn.core.appext.spi.SNAXPersonSpi bean implement
s full SNAXPersonService. API will defer to SPI bean.
24.09.2009 11:24:20 com.ibm.lconn.core.appext.msgvector.config.MessageVectorConf
ig <init>
INFO: Nachrichtenvektorkonfiguration für Vektortyp profiles-message-wall wurde e
rfolgreich initialisiert. Konfigurationsschemaversion: 1.
CLFRN0027I: Nach der Iteration gilt Folgendes: Erfolgreinträge: 1, doppelte Eint
räge: 0, Fehlereinträge: 0, letzter erfolgreicher Eintrag:
```

[http://publib.boulder.ibm.com/infocenter/ltscnct/v2r0/topic/com.ibm.connections.25.help/c\\_preinstall\\_actions.html](http://publib.boulder.ibm.com/infocenter/ltscnct/v2r0/topic/com.ibm.connections.25.help/c_preinstall_actions.html)

# Installationsschritte

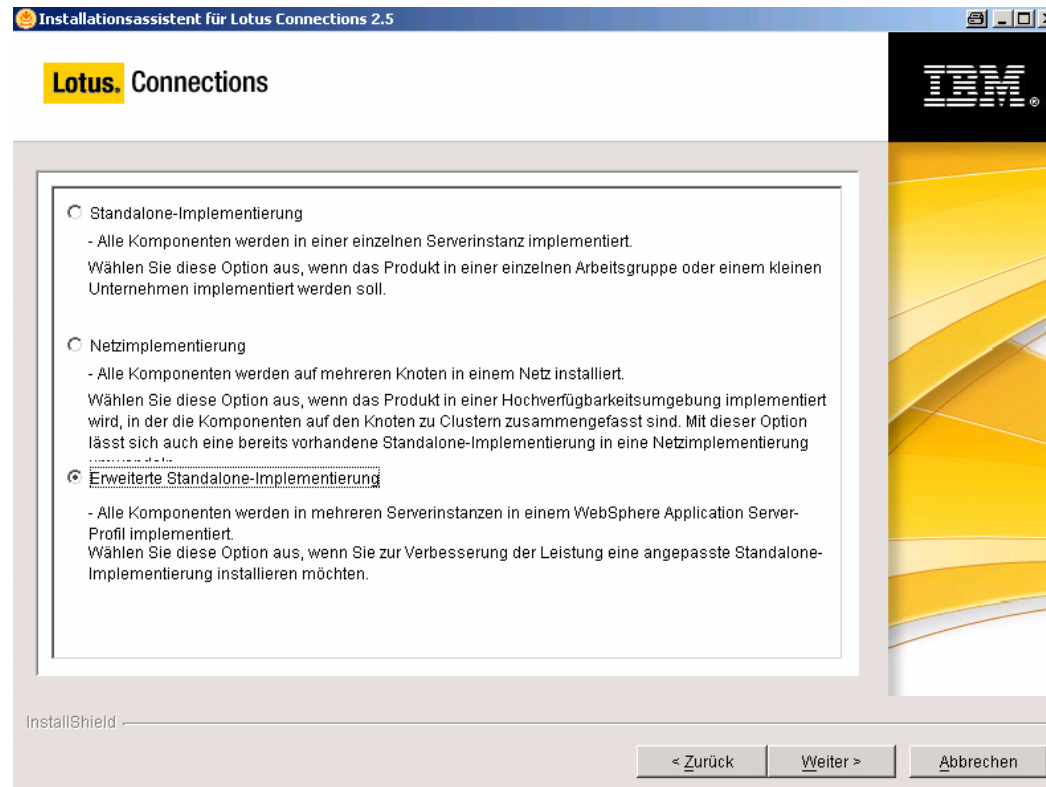
## 7. Installation Lotus Connections auf Basis des WAS Servers

Installationsvarianten:

Standalone Implementierung :  
Alle Komponenten auf einem  
Serverprozess

Netzimplementierung :  
Clusterinstallation

Advanced Standalone  
Implementierung: Komponenten  
können auf mehrere  
Serverprozesse verteilt werden,  
Hinweis: zusätzlich muss hier  
der SIBUS konfiguriert werden



[http://publib.boulder.ibm.com/infocenter/ltscnct/v2r0/topic/com.ibm.connections.25.help/c\\_preinstall\\_actions.html](http://publib.boulder.ibm.com/infocenter/ltscnct/v2r0/topic/com.ibm.connections.25.help/c_preinstall_actions.html)

# Installationsschritte

## 7. Installation Lotus Connections auf Basis des WAS Servers

Beispiel:  
Erweiterte Standalone  
Implementierung

Connections Komponenten  
werden hier auf 2  
unterschiedliche  
Serverprozesse verteilt

Installationsassistent für Lotus Connections 2.5

**Lotus.** Connections

Ausgewähltes WAS-Profil:  
AppSrv01

Geben Sie den Namen für die neue(n) Serverinstanz(en) an:

Aktivitäten	server1
Blogs	server1
Communitys	server2
Dogear	server2
Profile	server2
Wikis	server2
Dateien	server1
Suche	server1
Nachrichtenrepository	server1

InstallShield

< Zurück Weiter > Abbrechen

[http://publib.boulder.ibm.com/infocenter/ltscnct/v2r0/topic/com.ibm.connections.25.help/c\\_preinstall\\_actions.html](http://publib.boulder.ibm.com/infocenter/ltscnct/v2r0/topic/com.ibm.connections.25.help/c_preinstall_actions.html)

# Installationsschritte

## 8. Installation HTTP Server

Nach der Installation des HTTP Server muss beim HTTP Server noch SSL aktiviert werden:

<http://www-10.lotus.com/ldd/lcwiki.nsf/dx/test-enable-ssl>



[http://publib.boulder.ibm.com/infocenter/ltscnct/v2r0/topic/com.ibm.connections.25.help/c\\_preinstall\\_actions.html](http://publib.boulder.ibm.com/infocenter/ltscnct/v2r0/topic/com.ibm.connections.25.help/c_preinstall_actions.html)

# Installationsschritte

## 9. Finalisierung der Installation und Tuning

Für die Komponente Blogs muss noch die Homepage erstellt werden. Hierfür zuerst den Admin Benutzer in der WAS Admin Console definieren

[http://publib.boulder.ibm.com/infocenter/ltscnct/v2r0/topic/com.ibm.connections.25.help/t\\_config\\_blogs.html](http://publib.boulder.ibm.com/infocenter/ltscnct/v2r0/topic/com.ibm.connections.25.help/t_config_blogs.html)

Integrated Solutions Console Willkommen LCADMIN

Anzeigen: Alle Tasks

- Willkommen
- Geführte Aktivitäten
- Server
- Anwendungen
  - Enterprise-Anwendungen
  - Neue Anwendung installieren
- Ressourcen
- Sicherheit
- Umgebung
- Systemverwaltung
- Benutzer und Gruppen
- Überwachung und Optimierung
- Fehlerbehebung
- Serviceintegration
- UDDI

Enterprise-Anwendungen

Enterprise-Anwendungen > Blogs > Zuordnung von Sicherheitsaufgabenbereichen zu Benutzern/Gruppen

Zuordnung von Sicherheitsaufgabenbereichen zu Benutzern/Gruppen

Jeder in der Anwendung oder im Modul definierte Aufgabenbereich muss einem Benutzer einer Gruppe aus der Domänenbenutzer-Registry zugeordnet werden.

Benutzer suchen Gruppen suchen

Auswählen	Aufgabenbereich	Jeder?	Alle Authentifizierten?	Zugeordnete Benutzer	Zugeordnete Gruppen
<input type="checkbox"/>	person	<input type="checkbox"/>	<input checked="" type="checkbox"/>		
<input type="checkbox"/>	everyone	<input checked="" type="checkbox"/>	<input type="checkbox"/>		
<input checked="" type="checkbox"/>	admin	<input type="checkbox"/>	<input type="checkbox"/>	SP03	
<input type="checkbox"/>	search-admin	<input type="checkbox"/>	<input type="checkbox"/>	LCADMIN	
<input type="checkbox"/>	widget-admin	<input type="checkbox"/>	<input type="checkbox"/>	LCADMIN	
<input type="checkbox"/>	reader	<input checked="" type="checkbox"/>	<input type="checkbox"/>		

OK Abbrechen

[http://publib.boulder.ibm.com/infocenter/ltscnct/v2r0/topic/com.ibm.connections.25.help/c\\_preinstall\\_actions.html](http://publib.boulder.ibm.com/infocenter/ltscnct/v2r0/topic/com.ibm.connections.25.help/c_preinstall_actions.html)

# Installationsschritte

## 9. Tuning

Integrated Solutions Console Welcome wpadmin

View: All tasks

- Welcome
- Guided Activities
- Servers
  - Application servers
  - Web servers
  - WebSphere MQ servers
- Applications
  - Enterprise Applications
  - Install New Application
- Resources
  - Schedulers
  - Object pool managers
  - JMS
  - JDBC
    - JDBC Providers
    - Data sources
    - Data sources (WebSphere Application Server V4)
  - Resource Adapters
  - Asynchronous beans
  - Cache instances
  - Mail
  - URL
  - Resource Environment
- Security

JDBC providers

JDBC providers

[JDBC providers](#) > [wikisJDBC](#) > [Data sources](#) > [wikis](#) > [Connection pools](#)

Use this page to set properties that impact the timing of connection manager of your application. Consider the default values carefully; your application requires values.

Configuration

**General Properties**

Scope  
cells:lcprod01Node01Cell:nodes:lcprod01Node01:servers:newsrepo

Connection timeout  
680 seconds

Maximum connections  
50 connections

Minimum connections  
1 connections

Reap time  
180 seconds

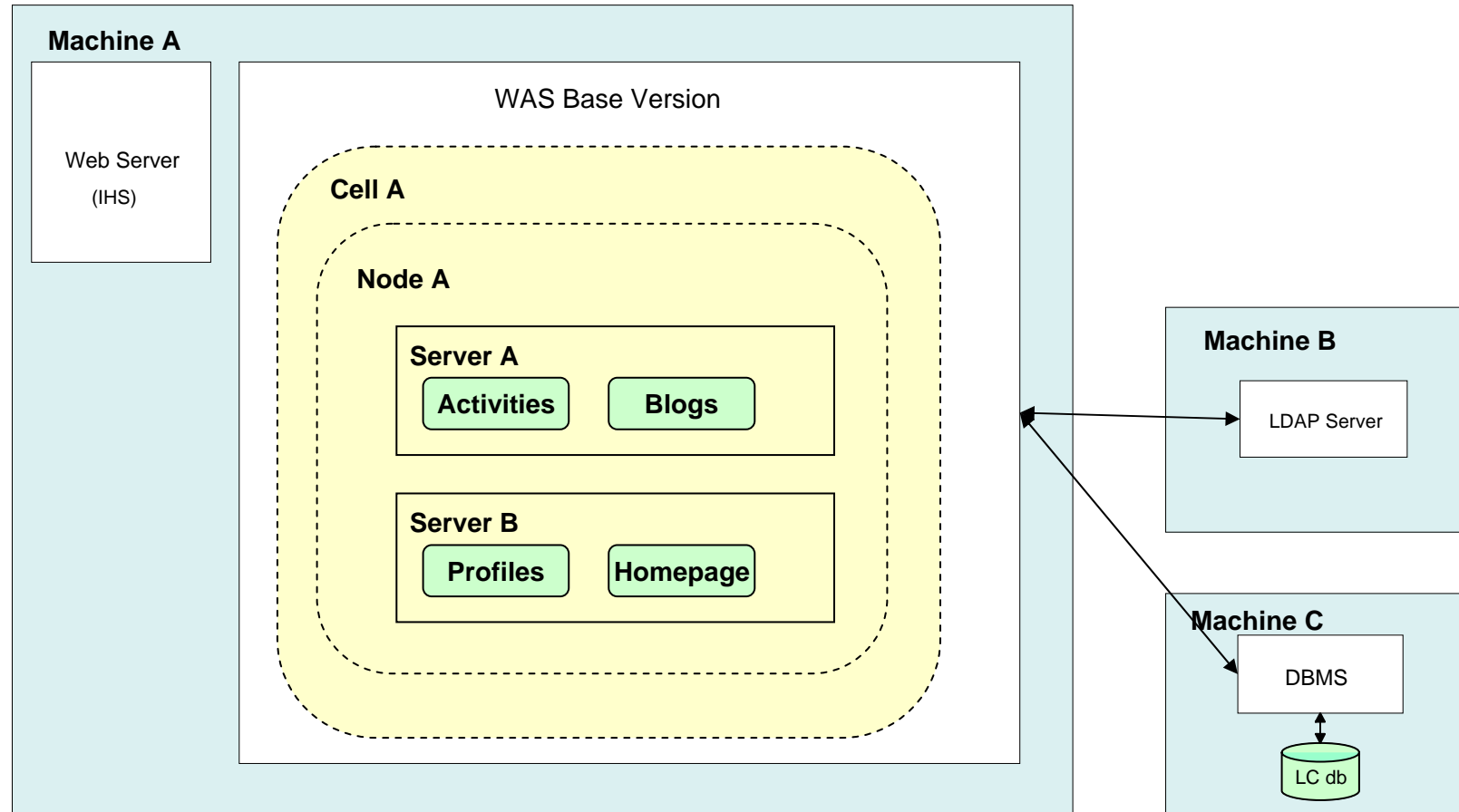
Unused timeout  
1800 seconds

Aged timeout  
0 seconds

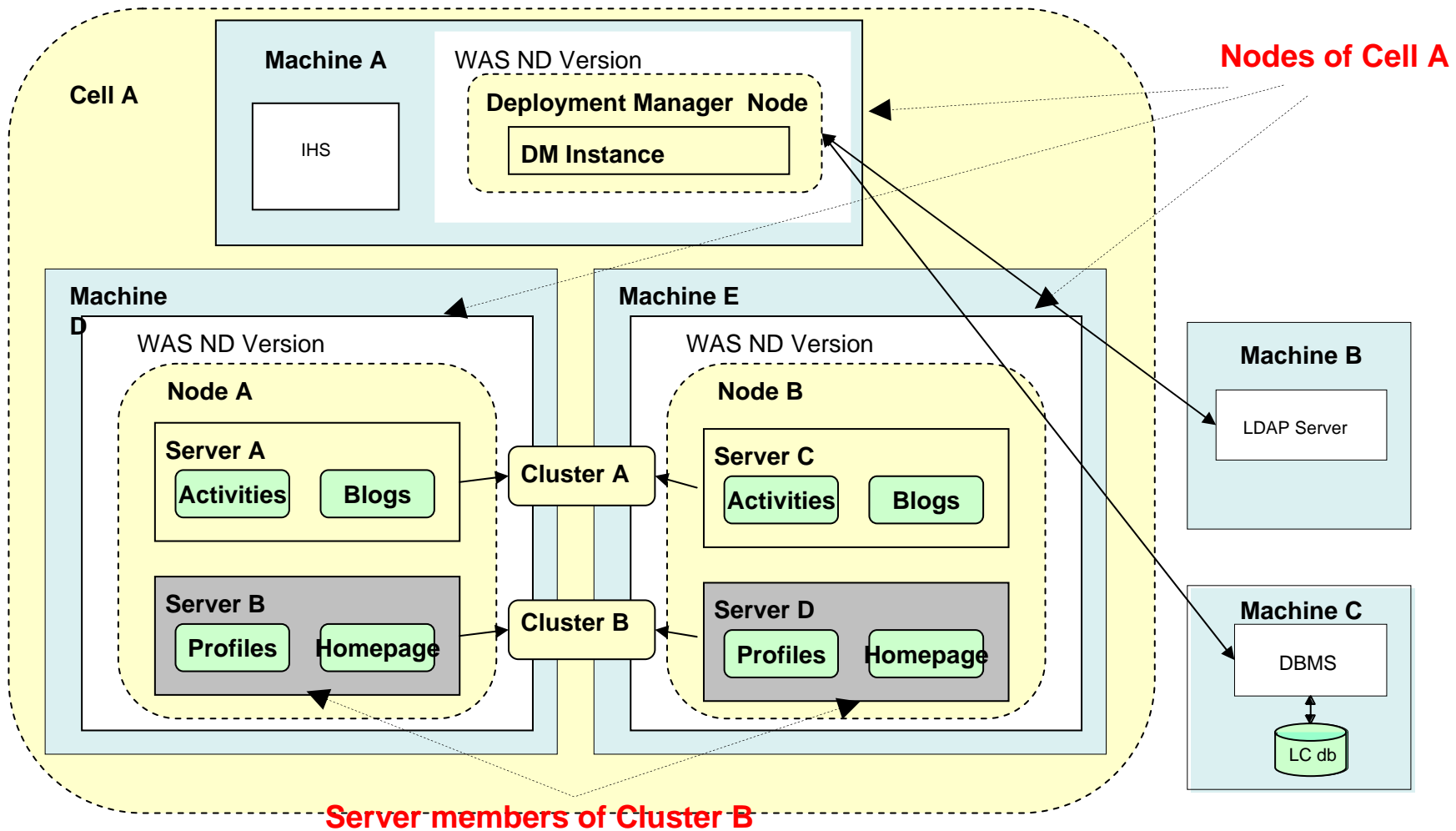
Purge policy  
EntirePool

[http://publib.boulder.ibm.com/infocenter/ltscnct/v2r0/topic/com.ibm.connections.25.help/c\\_preinstall\\_actions.html](http://publib.boulder.ibm.com/infocenter/ltscnct/v2r0/topic/com.ibm.connections.25.help/c_preinstall_actions.html)

# Topology - stand-alone



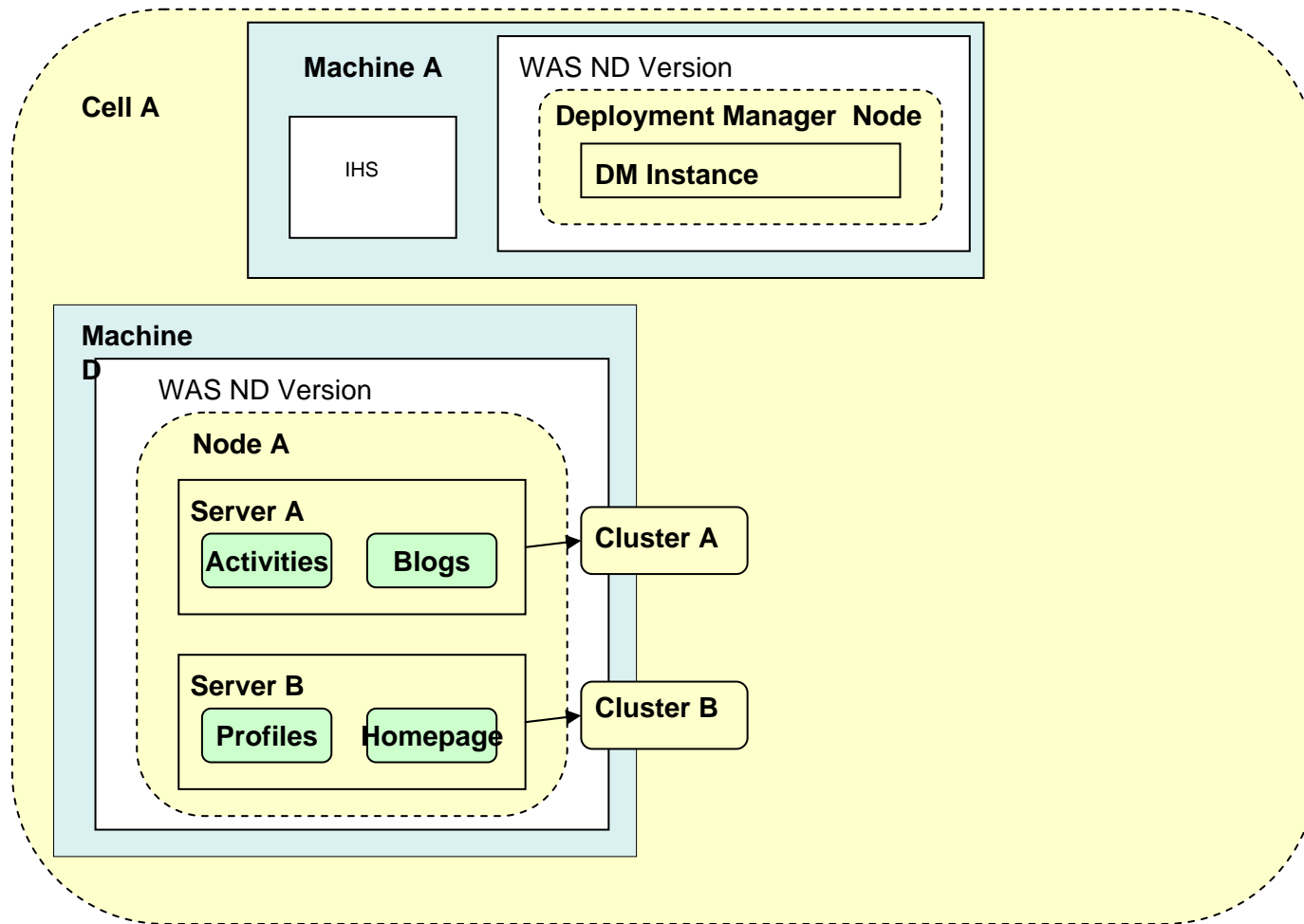
# Topology - network deployment



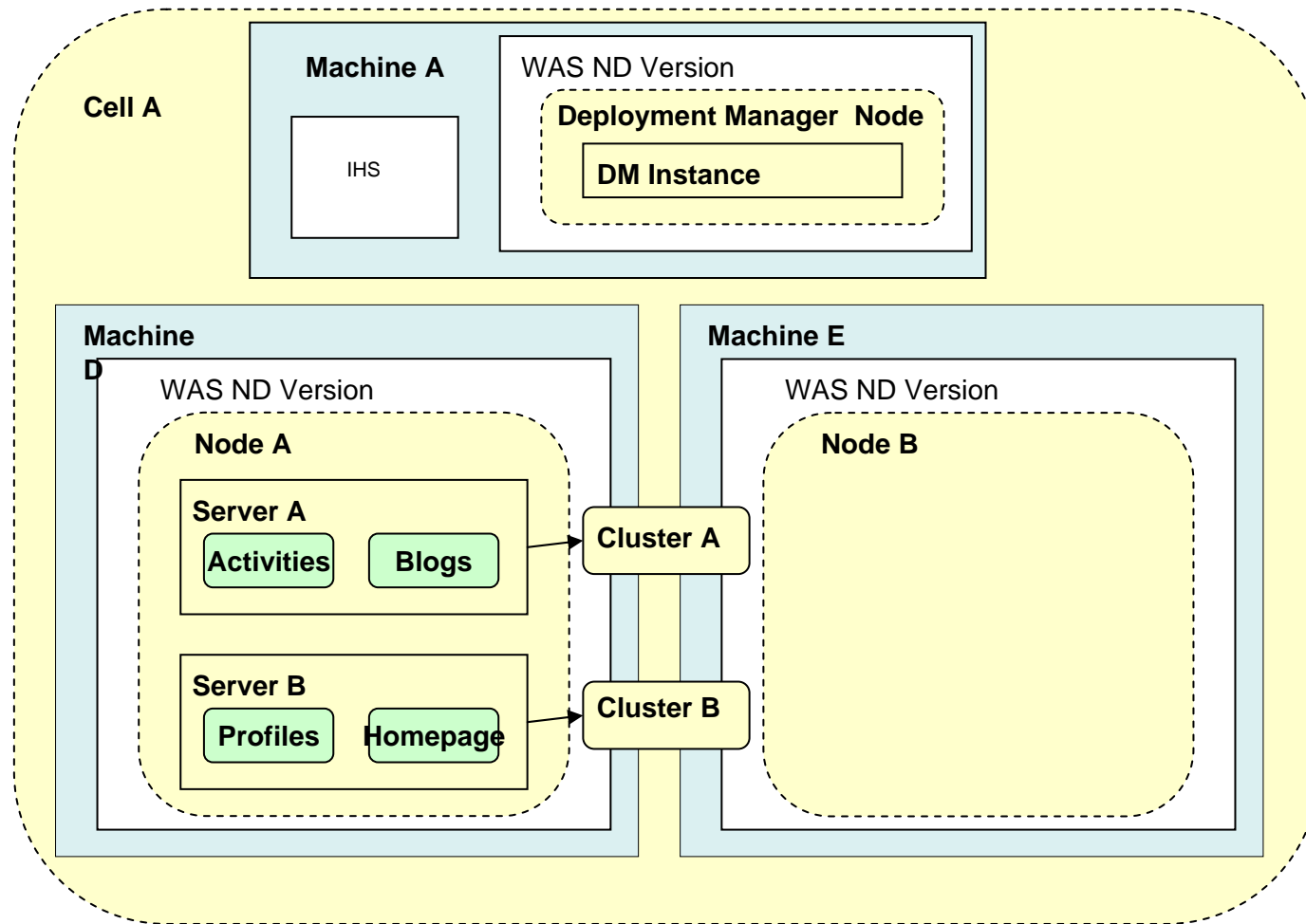
# Simplify clustering

- Install a network deployment
  - ▶ Install the first node using **install wizard** (2-3 hours)
  - ▶ Install the secondary nodes **manually** (30 mins)
    - Step 1: federate the node - **running addnode.bat on the node**
    - Step 2: add new cluster server members - **from DM admin console**
- Uninstall a network deployment
  - ▶ Remove the secondary nodes manually
    - **Note: don't remove the first server member from the cluster**
  - ▶ Run uninstall wizard on the first node
- Support flexible increase and decrease of the cluster scope
  - ▶ Topology can be easily managed within DM admin console, including:
    - Adding/removing **subsequent** server member to cluster
    - Adding/removing **secondary** nodes

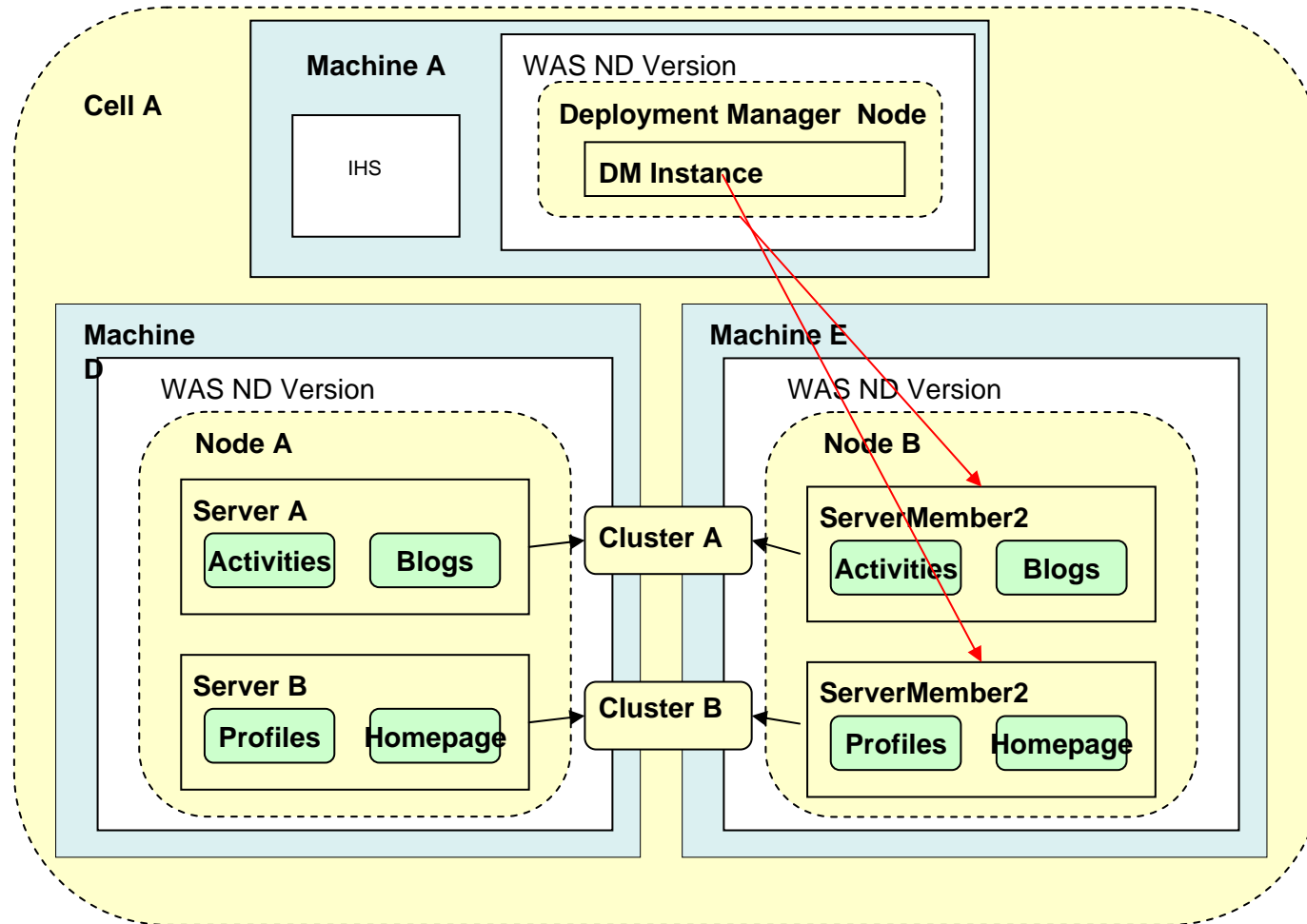
# Install the first node



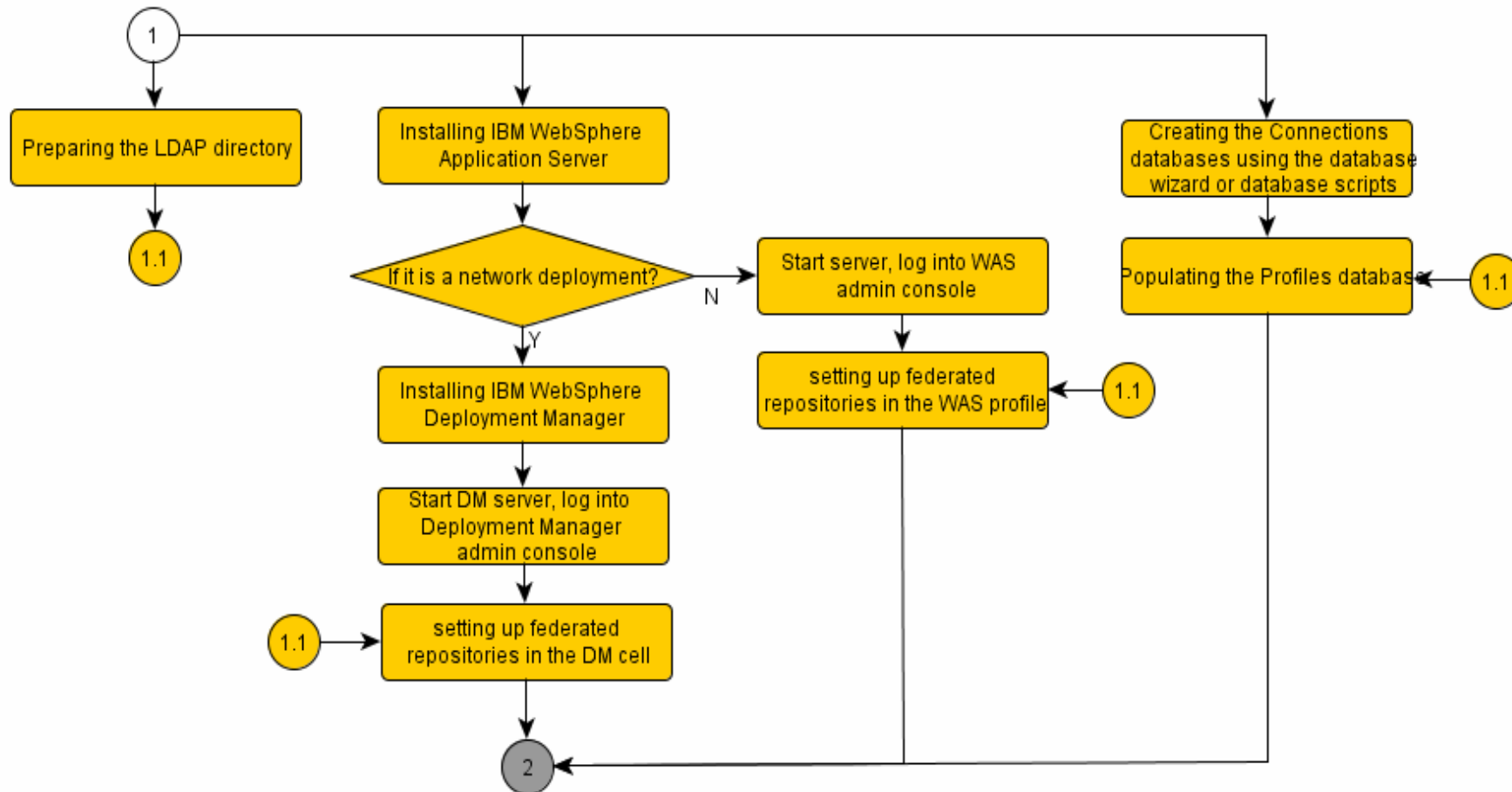
# Install secondary node(s) – federate node



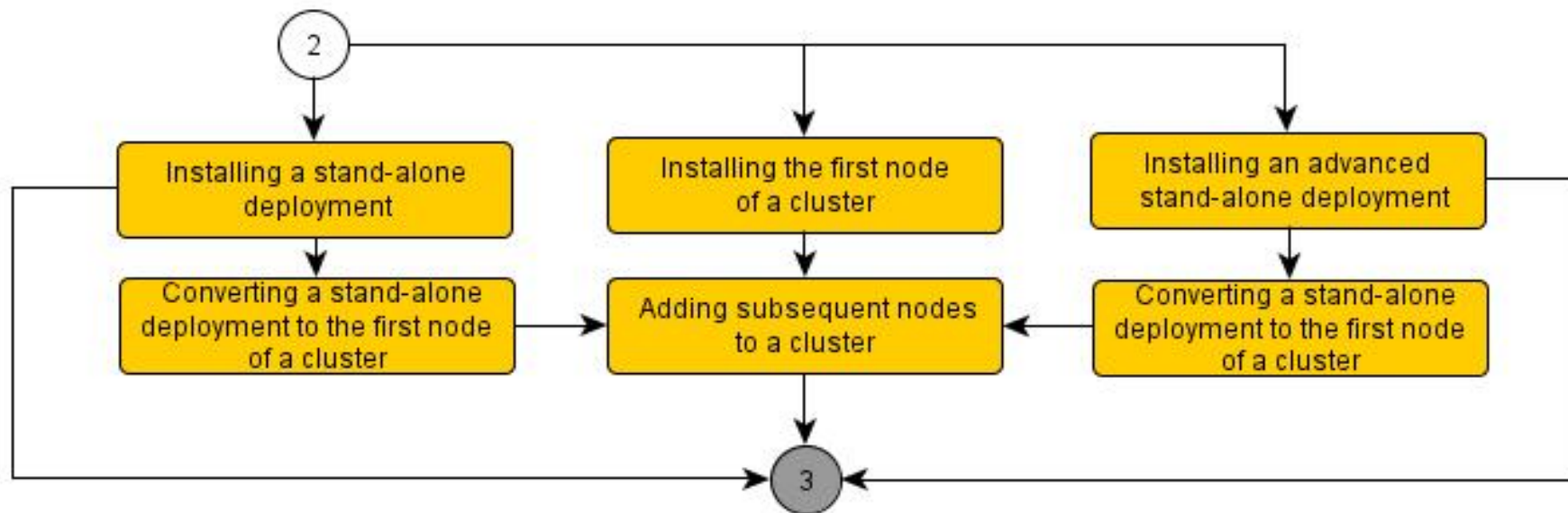
# Install secondary node(s) – add new server member to cluster



# Install overview – pre-install



# Install overview – install



# Install overview – critical post-install steps

- Configuring IHS – DON'T FORGET SSL
  
- For **advanced stand-alone**
  - ▶ Linking service integration bus manually (Used by News repository)  
[http://publib.boulder.ibm.com/infocenter/ltscnct/v2r0/topic/com.ibm.connections.25.html/t\\_linking\\_buses\\_manually.html](http://publib.boulder.ibm.com/infocenter/ltscnct/v2r0/topic/com.ibm.connections.25.html/t_linking_buses_manually.html)
  
- For **network deployment**
  - ▶ Configure shared message stores for service integration bus  
[http://publib.boulder.ibm.com/infocenter/ltscnct/v2r0/topic/com.ibm.connections.25.html/t\\_configure\\_message\\_stores\\_buses.html](http://publib.boulder.ibm.com/infocenter/ltscnct/v2r0/topic/com.ibm.connections.25.html/t_configure_message_stores_buses.html)



# Trouble shooting

**Lotus** software

A horizontal decorative bar composed of various colored segments: yellow, red, purple, cyan, green, a cluster of yellow circles, a person's face, a calculator, and several yellow human figures.

@business on demand software

© 2008 IBM Corporation

# Install Common Failures

- Not enough space
  - ▶ Make sure you got 500MB space in the <temp> dir
- Can not detect WAS/Profile
  - ▶ Make sure WAS version is more than 6.1.0.23
  - ▶ Make sure WAS profile is in <WAS\_HOME>/profile
- Failed to authenticate user for accessing SIBus.
  - ▶ Make sure the administrative user specified during install is correct
  - ▶ for Network deployment you must enter the DM administrative user, for stand-alone deployment you must enter current WAS server administrative user.
- Failed to create server instance
  - ▶ Make sure there is no special character instance name, such as #,\$,^, space, etc...
- Failed to install the first node
  - ▶ Make sure the node you are installing in is **not a managed node**
  - ▶ Make sure you are not installing on the DM profile
- Failed to federate node
  - ▶ ensure that you don't open any subdirectory under <WAS\_HOME>/profiles/<profile>/config/cells/<standalone\_cell>, if any subdirectory is opened, federation of node will fail because it can't change the name of the cell directory
- Failed to add server process into cluster
  - ▶ ensure you input correct value for cluster member name, this value should be unique for the cluster especially on secondary node this is usually the issue
  - ▶ Ensure the system application Filetransfer has been installed on DM (this is installed by default on DM)

# Problem Determination and Recovery

- If stand-alone install fails
  - ▶ Remove the WAS profile
    - If customer won't take this option, we need to manually remove the configuration items from the admin console, according to instructions in the info center
  - ▶ Create a new profile
  - ▶ Delete the Lotus Connections install home
  - ▶ Rerun installer
  
- If network deployment install fails
  - ▶ If there is a failure before node is federated.
    - Correct the problem
    - Rerun the installer to convert the stand-alone node to a cluster
  - ▶ If there is a failure after node is federated
    - Unfederate the node from the DM admin console
    - Remove configuration items from DM according to the manual uninstall instructions in the info center
    - Rerun installer

# Lotus Connections 2.5 Install Log File 1/10

## ■ Startup

### ▶ ISMP initialization

com.ibm.wps.install.LogEntryAction, msg1, Logging: \*\*\* JVM Runtime Properties - START \*\*\*

... ..

com.ibm.wps.install.LogEntryAction, msg1, Logging: \*\*\* ISMP \$VARs - END \*\*\*

### ▶ Decode password from a silent response file

com.ibm.wps.install.IncludeClassAction, msg2, Adding class: com.ibm.wps.install.Base64Coder

MultiPlatform.install, com.ibm.wps.install.PasswordEncodeAction, msg2, Decoding

PASSWORD\_REMOVED to property activities.db.password.decode

.....

com.ibm.wps.install.SetUserInputPanelPropertyAction2, msg2, Setting bean property successful

## Lotus Connections 2.5 Install Log File 2/10

- Check previous installed products

- ▶ LC check

com.ibm.wps.install.CheckVPDRegistry, msg1, Initializing check for previous Lotus Connections versions.

... ..

com.ibm.wps.install.CheckVPDRegistry, msg1, There is Lotus Connections install detected. However it is not prior to release 2.0.0.0

- ▶ WAS/OS check

com.ibm.wps.install.PortalValidationAction, msg2, Detected 2 current WAS installed

com.ibm.wps.install.PortalValidationAction, msg2, Current WAS:  
{Location=/opt/WebSphere61/AppServer, Version=6.1.0.19.0}

.....

com.ibm.wps.install.PortalValidationAction, msg2, PortalValidation version info for OS:  
susesles 10.0.0.0

# Lotus Connections 2.5 Install Log File 3/10

## ■ WAS info detection

com.ibm.wps.install.WasNodeCellAction, msg2, About to discover WAS node name and cell name for  
/opt/WebSphere61/AppServer/profiles/appprofile

com.ibm.wps.install.WasNodeCellAction, msg2, Nodes for WAS at  
/opt/WebSphere61/AppServer/profiles/appprofile: [PHPM1CSMWAS14]

com.ibm.wps.install.WasNodeCellAction, msg2, Cells for WAS at  
/opt/WebSphere61/AppServer/profiles/appprofile: [phpm1csmwas14Node02Cell]

## ■ Checking installed features

com.ibm.wps.install.ExternalCommandAction, msg2, Beginning install step: Checking installed  
features on the server

.....

com.ibm.wps.install.ExternalCommandAction\$OutputWatcher, msg2, StdOut: Get App Info: Info –  
installedFeatures **activities, blogs**

## Lotus Connections 2.5 Install Log File 4/10

- Check WAS security

- ▶ LC requires “administrative security” and “application security”

- com.ibm.wps.install.WasSecurityAction, msg2, Display text = Checking to see if WebSphere Application Server security is enabled...

- .....

- com.ibm.wps.install.WasSecurityAction, msg2, WAS security enabled = false

- .....

- com.ibm.wps.install.ExternalCommandAction\$OutputWatcher, msg2, StdOut: Check Application Security: Info - WebSphere Application Security is true

- Getting existing cluster/application information from DM

- com.ibm.wps.install.ExternalCommandAction, msg2, Beginning install step: Trying to retrieve deployment manger certificate...

- .....

- com.ibm.wps.install.ExternalCommandAction\$OutputWatcher, msg2, StdOut: Get DM Info: Info -

- Cluster list from**

- DM:DACTIVITIES01US;;DBLOGS01US;;DCOMMUNITIES01US;;DDOGEAR01US;;DHOME PAGE 01US;;DNEWS01US;;DPROFILES01US;;DSEARCH01US;;DSERVER101US;;DWIKIS01US;;**

- .....

- com.ibm.wps.install.ExternalCommandAction\$OutputWatcher, msg2, StdOut: Get App Info: Info – installedFeatures activities, blogs

# Lotus Connections 2.5 Install Log File 5/10

- Validating DB connection

- ▶ Validation error here won't cause install failure, can not corrected via admin console post install

```
com.ibm.wps.install.IncludeClassAction, msg2, Adding class: com.ibm.wps.install.DbConnectionValidator
```

```
.....
```

```
com.ibm.wps.install.PropertiesLoadAction, Set validation.result=PASS
```

- Create new server instance

```
com.ibm.wps.install.ExternalCommandAction, msg2, Executing command: sh  
/opt/WebSphere61/AppServer/profiles/appprofile/bin/wsadmin.sh -conntype NONE -lang jython -f  
/tmp/LotusConnections25/Lotus_Connections_Install/ConfigEngine/config/was/wkplc_CreateConnectionsServer.py -currentNode NewsServer /opt/WebSphere61/AppServer appprofile  
/tmp/extlaunch/createServerLog.txt -wsadmin_classpath /tmp/extlaunch/dist/sninstall.jar
```

```
.....
```

```
com.ibm.wps.install.ExternalCommandAction$OutputWatcher, msg2, StdOut:  
createConnectionsServer: Successfully create the server
```

## Lotus Connections 2.5 Install Log File 6/10

- register feature information (repeats for each feature)
  - ▶ Anything wrong here might be caused by undeleted registry.xml from last install or corrupted install folder that is missing some feature specific files
  - ▶ Most of the install result “**Install failed while creating WAS variables**” is caused by failure of this task

```
com.ibm.wps.install.ExternalCommandAction, msg2, Executing command: sh
/opt/WebSphere61/LotusConnections/ConfigEngine/ConfigEngine.sh -install -productludd
news.xml -productRoot /opt/WebSphere61/LotusConnections/product -installLocation
/opt/WebSphere61/LotusConnections
```

.....

```
com.ibm.wps.install.ExternalCommandAction, msg2, Completed install step: Installing features...
```

- Starting to deploy features onto WAS (repeats for each feature)

```
com.ibm.wps.install.ExternalCommandAction, msg2, Executing command: sh
/opt/WebSphere61/LotusConnections/ConfigEngine/ConfigEngine.sh basic-config -
Dcomponent=news -DWasUserid= -DWasPassword=PASSWORD_REMOVED
```

## Lotus Connections 2.5 Install Log File 7/10

- Critical tasks for feature deployment (repeats for each feature)
  - ▶ Deploy EAR file  
com.ibm.wps.install.ExternalCommandAction\$OutputWatcher, msg2, StdOut: **action-create-ear-activities:**
  - ▶ Update LotusConnections-config.xml  
com.ibm.wps.install.ExternalCommandAction\$OutputWatcher, msg2, StdOut: **update-lotusconnections-config-activities**
  - ▶ Setting feature-specific WAS configuration
    - Any JAVA 105 return result here might cause feature malfunction
  - com.ibm.wps.install.ExternalCommandAction\$OutputWatcher, msg2, StdOut: **action-run-post-wasconfig-activities**
  - ▶ Feature deployment success message  
com.ibm.wps.install.ExternalCommandAction\$OutputWatcher, msg2, StdOut: BUILD SUCCESSFUL  
com.ibm.wps.install.ExternalCommandAction\$OutputWatcher, msg2, StdOut: Total time: 2 minutes 38 seconds

# Lotus Connections 2.5 Install Log File 8/10

- Cluster Install startup

- Cluster task get started message

Beginning install step: Creating cluster of server instance

Executing command: sh /opt/IBM/LC/WebSphere/LotusConnections/ConfigEngine/ConfigEngine.sh

action-cluster-setup-lc -DprofileName=AppSrv01 -DDMuserid=cdtwptst@ca.ibm.com -

DDMPassword=PWD\_REMOVED -Dforce=true

Working directory: /opt/IBM/LC/WebSphere/LotusConnections/ConfigEngine

- Adding node into DM cell

action-cluster-addnode-lc:

Thu Jul 30 19:51:30 GMT 2009

[echo] nd.DMgrHostName=a01cizwas001g.pok.ibm.com

[echo] nd.DMgrSoapPort=8902

[echo] DMuserid=cdtwptst@ca.ibm.com

...

[echo] @@wplc-addnode-successful@@@:<server\_name>

Anything wrong here might caused by

1. DM can not be connected
2. Network connection timeout
3. DM admin credential is not correct
4. Disk space is not enough

# Lotus Connections 2.5 Install Log File 9/10

## ▶ Creating cluster

### action-run-cluster-wasconfig-1c:

Thu Jul 30 20:43:15 GMT 2009

[echo] wasHome: /opt/IBM/LC/WebSphere/AppServer

[echo] props:

/opt/IBM/LC/WebSphere/LotusConnections/ConfigEngine/config/work/was/jacl.properties

...

**SIBus creation status, anything wrong here might caused by the wrong SIBus configuration.**

[wsadmin] Creating SIBus.....

[wsadmin] SIBus ConnectionsBus created successfully!

[wsadmin] Adding bus authenticated user cdtwptst@ca.ibm.com .....

[wsadmin] Bus authenticated user cdtwptst@ca.ibm.com added successfully!

...

**SIBus member creation status**

[wsadmin] Creating SIBus Member.....

[wsadmin] SIBus Member Activities\_Cluster created successfully!

...

**Creating JMS Queue**

[wsadmin] Creating JMS Queue Connection Factory.....

[wsadmin] Queue Connection Factory: Activities QCF created successfully!

...

[echo] @@wplc-create-cluster-successful@@:<server\_name>

**Anything wrong here might caused by:**

1. a failure status caused in above step.
2. already existing the same cluster

# Lotus Connections 2.5 Install Log File 10/10

- ▶ Cluster post configuration

action-nd-create-virtualhost-port-lc:

...

[echo] @@wplc-post-configuration-successful@@:<server\_name>

**Check the cluster post successful message, anything wrong here might caused by the failure status of virtual host task**



# Migration

**Lotus** software

A decorative horizontal bar with a yellow background and various icons including a calculator, a person, and human figures.

@business on demand software

© 2008 IBM Corporation

# Overall strategy

- Levels of Upgrade
  - ▶ Major Release Migration
    - Application migration:
      - Fresh install of new version Lotus Connections is required
      - Migration tool is used to migrate the configuration and content store
    - Database upgrade: DB Wizard
  - ▶ Fixpack Update
    - Application upgrade: **Update Installer (Based on PUI)**
    - DB upgrade: **DB Wizard**
  - ▶ iFix Update
    - Application upgrade: **Update Installer**
    - **No DB upgrade**
- Terminology:
  - ▶ Migration: major release upgrade
  - ▶ Update/Upgrade: Fixpack/iFix update

## Migration path

- Lotus Connections 2.5 migration path
  - ▶ 2.0.1 -> 2.5GA
  - ▶ 2.0.1 -> 2.5 beta1 -> 2.5beta2 -> 2.5GA
  - ▶ For releases other than 2.0.1, please update to 2.0.1 first.

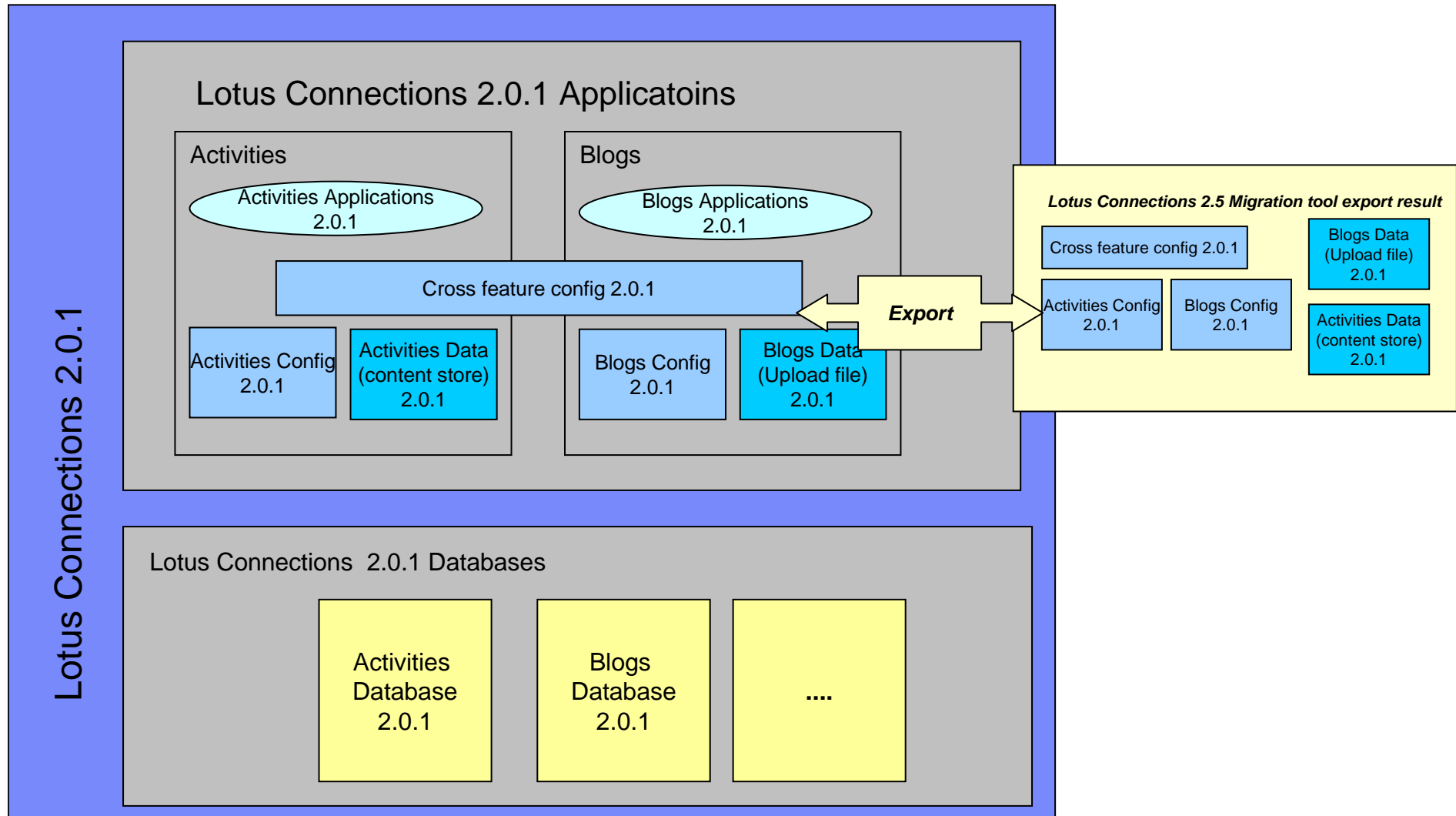
# Migration process

- Database upgrade – Database configuration wizard
  - ▶ Scenarios: side by side, in place
  - ▶ Wizard can only handle 2.0.1 to 2.5 GA
  - ▶ Apply sql scripts manually to handle beta upgrades
    - Note that for several features that need run java class to migrate
  
- Application migration – Migration tool
  - ▶ Use migration tool to export from any lower version and import to higher version, e.g. 2.0.1->2.5, 2.5b1 -> 2.5, 2.5 pilot -> 2.5 production
  
  - ▶ Where to start:
    - ▶ Standalone: start migration tool on the WAS node that LC is installed
    - ▶ Network deployment: start from **any node** that LC is installed, only once execution is needed. No need to run export/import on each node.

## Database migration

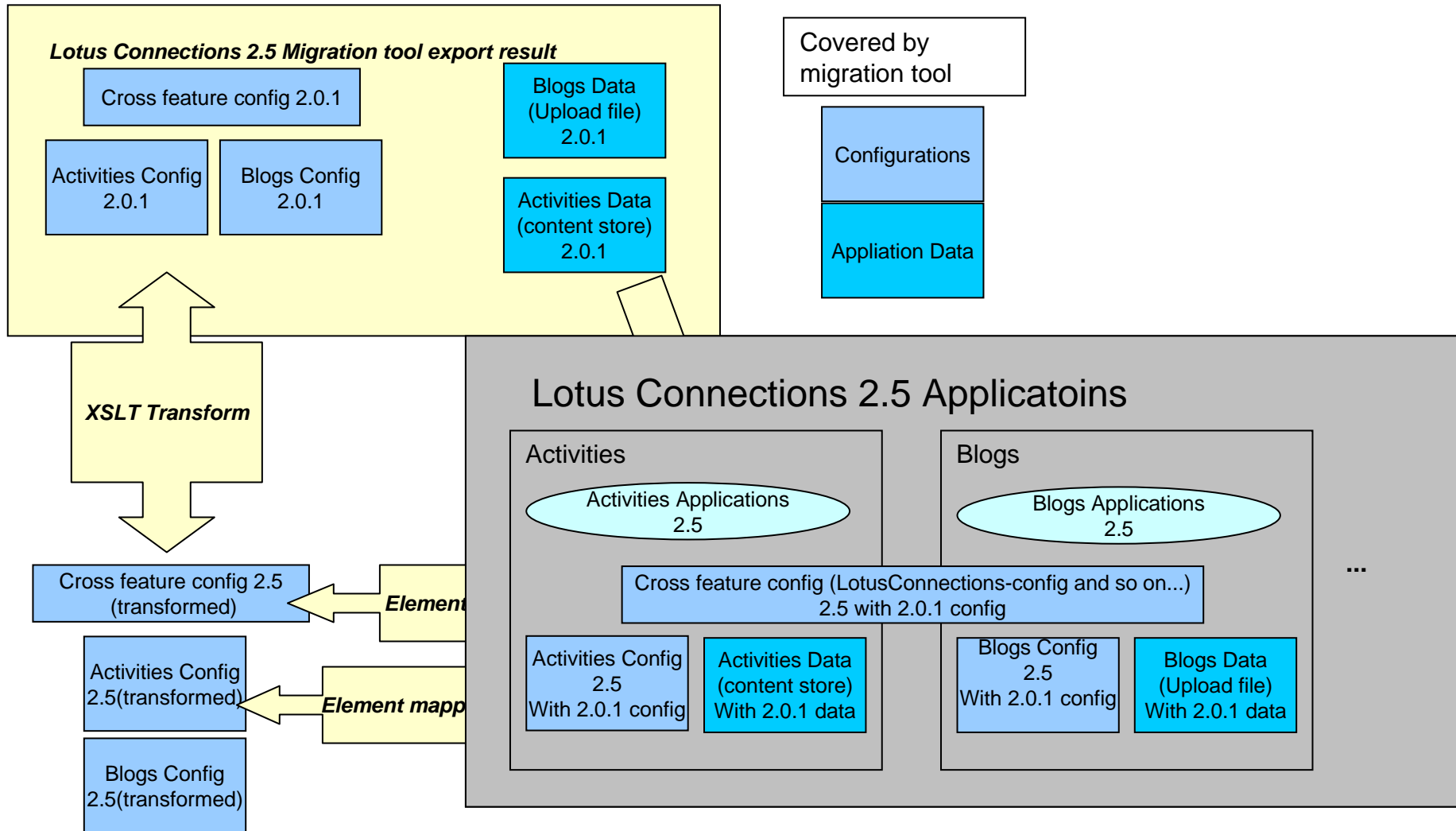
- Using Database configuration wizard
  - ▶ Only support 2.0.1 -> 2.5 GA
  - ▶ Enable more comprehensive log of wizard
    - By default wizard log level is INFO
    - Add **-Dloglevel=ALL** java attribute in batch file to get detail log, e.g.
      - start javaw **-Dloglevel=ALL** -Djava.library.path=lib/linkfile com.ibm.lconn.wizard.launcher.TDIPopulationLauncher %\*
      - java **-Dloglevel=ALL** -Djava.library.path=lib/linkfile com.ibm.lconn.wizard.launcher.TDIPopulationLauncher %\*
- Manually upgrade database

# Migration tool - Export



Lotus Connections 2.0.1

# Migration tool - Import



# Information

- Information

- ▶ Information center

<http://publib.boulder.ibm.com/infocenter/ltscnct/v2r0/topic/com.ibm.connections.25.help/welcome.html>

- ▶ Connections wiki

<http://www-10.lotus.com/ldd/lcwiki.nsf/>

# Q & A